


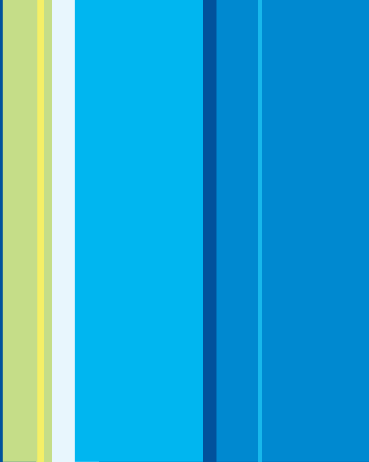


SAMSUNG

Samsung Universal Print Driver

User's Guide

imagine the possibilities



Copyright

© 2009 Samsung Electronics Co., Ltd. All rights reserved.

This admin guide is provided for information purposes only. All information included herein is subject to change without any notice.

Samsung Electronics is not responsible for any direct or indirect damages, arising from or related to use of this user's guide.

- Samsung Universal Print Driver is a trademark of Samsung Electronics Co., Ltd
- Samsung and Samsung logo are trademarks of Samsung Electronics Co., Ltd.
- Microsoft, Windows, Internet Explorer and Windows Vista are either registered trademarks or trademarks of Microsoft Corporation in the United States and other countries.
- All other brand, product and company names herein may be the trademarks of their respective owners.

REV. 1.00

Contents

COPYRIGHT/2

CONTENTS/3

INTRODUCTION

Samsung Universal Print Driver vs. Model specific drivers	4
System requirements	4

INSTALLING AND UNINSTALLING THE SAMSUNG UNIVERSAL PRINT DRIVER

Installing Samsung Universal Print Driver	5
Uninstalling Samsung Universal Print Driver	6

USING THE SAMSUNG UNIVERSAL PRINT DRIVER


Accessing the Samsung Universal Print Driver	7
Layout overview	8
Changing Samsung Universal Print Driver settings	9
Setting the pop-up option	9
Setting the printer search option	10
Searching print devices	11
By TCP/IP address	11
By Search Now menu	11
Creating a favorite folder	11
Help	13
Printing with Samsung Universal Print Driver	13
Basic printing	13
Changing the selected printer	13

INDEX/14

Introduction

The Samsung Universal Print Driver is a single driver that can be used with different printer models. This gives users instant access to not only Samsung print devices but also a range of other vendor's PDL based devices without the need to download separate drivers.



- PDL means both PCL and PS.
- Samsung does not guarantee the quality of other vendors' printer devices and Samsung models that are not supported (Click  to see the supported Samsung device list). For unsupported Samsung models, driver is automatically set to usable default PDL.

Samsung Universal Print Driver vs. Model specific drivers

The following table shows the differences between the Samsung Universal Print Driver and the product based drivers:

	SAMSUNG UNIVERSAL PRINT DRIVER	MODEL SPECIFIC DRIVERS
User interface	Consistent user interface.	Inconsistent user interface.
Installation	<ul style="list-style-type: none">• Download and install with the installer file provided with the Samsung Universal Print Driver.• Install via executing the installer file.	<ul style="list-style-type: none">• Manually locate, download, and install driver for each device.• Install via CD autorun or Add printer wizard.
Device discovery	Easily locate and access suggested devices from the whole Samsung printer products.	Manually discover devices.
Availability	Available on the Samsung web site.	Available on the CD provided with the device, or the product based driver.

System requirements

Minimum system requirements for the Samsung Universal Print Driver are as follows:

OPERATING SYSTEM	REQUIREMENTS		
	CPU	RAM	FREE HDD SPACE
Windows Vista	1 GHz	1 GB	40 GB
Windows XP	300 MHz or higher	128 MB RAM or higher	1.5 GB or higher (additional 1.8 GB in SP2 and additional 900 MB in SP3)
Windows 2000	133 Mhz	64 MB	2GB
Windows Server 2003	550 MHz or higher	256 MB RAM or higher	2.9 GB or higher
Windows Server 2008	2 GHz or faster	2 GB RAM or higher	40 GB or higher

Installing and Uninstalling the Samsung Universal Print Driver

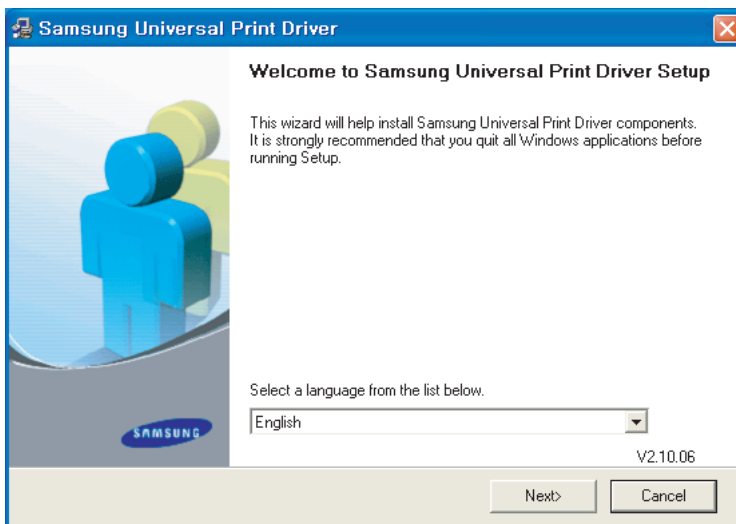
This chapter gives you step-by-step instructions for installing and uninstalling the Samsung Universal Print Driver.

 The following windows are for a PCL driver in Windows XP. Windows may differ for a PS driver, but the steps are the same.

Installing Samsung Universal Print Driver

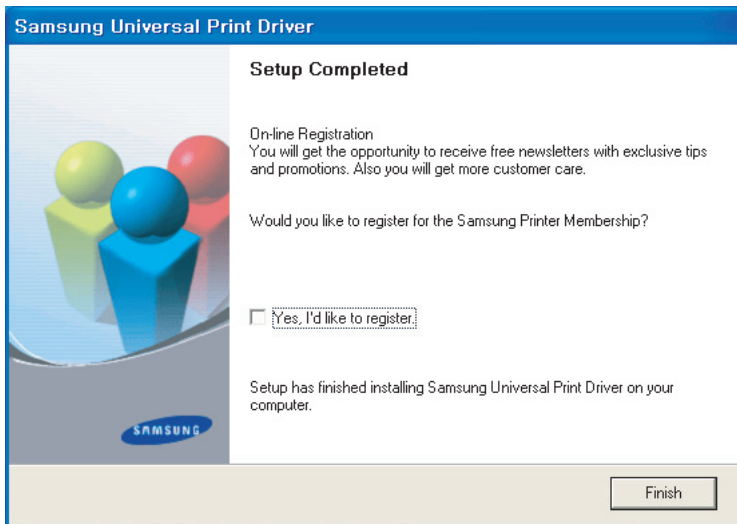
Before installing the driver, check the recommended minimum requirements for your system (See "System requirements" on page 4).

1. Start a web browser and go to www.samsung.com.
2. Search for the Samsung Universal Print Driver setup file.
3. Start the setup file.
The Samsung Universal Print Driver Installer Wizard opens.
4. Click **Next**. If necessary, select a language from the drop-down list.



5. After the installation window opens, wait for installation to be completed.
After the Setup Completed window opens, click **Finish**.
If you want to register yourself as a user of Samsung devices in order to receive information from Samsung, select the

checkbox and click **Finish**.

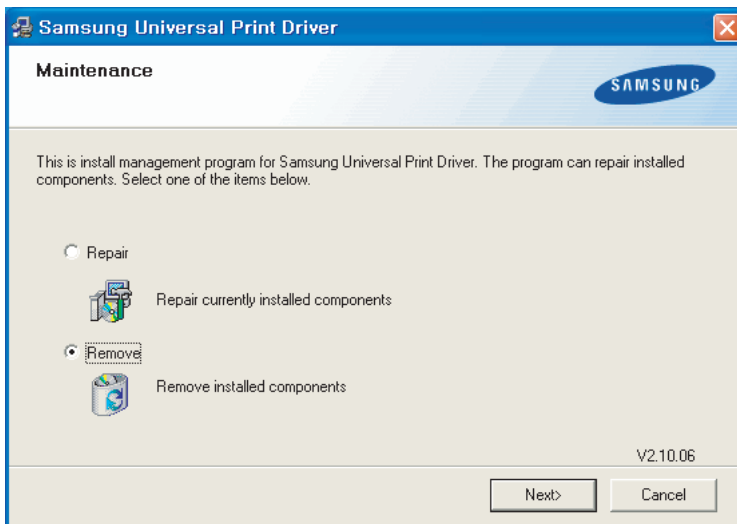


If the driver is installed properly, you can find the Samsung Universal Print Driver in the **Printers and Faxes** folder.

Uninstalling Samsung Universal Print Driver

If you want to uninstall the Samsung Universal Print Driver, follow the steps below:

1. From the Windows Start menu, select > **All Programs** > **Samsung Universal Print Driver** > **Maintenance**. The Samsung Universal Print Driver Installer Wizard opens.
2. Select **Remove** and click **Next**.



3. Select the components you want to remove and click **Next**.
4. A confirmation window appears, click **Yes**.
5. When uninstallation is completed, click **Finish**.

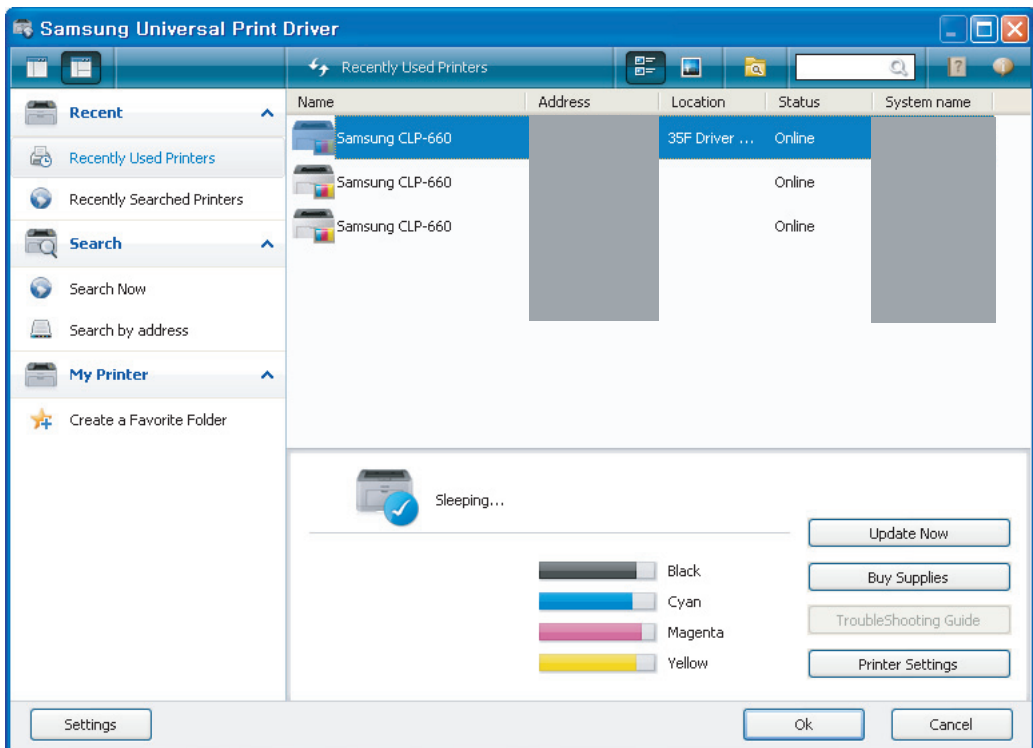
Using the Samsung Universal Print Driver


The main purpose of the Samsung Universal Print Driver is to install one driver (Samsung Universal Print Driver) and use it with different print devices. However, the Samsung Universal Print Driver has other features like searching print devices, creating a favorites folder, and checking a device's status.

Accessing the Samsung Universal Print Driver

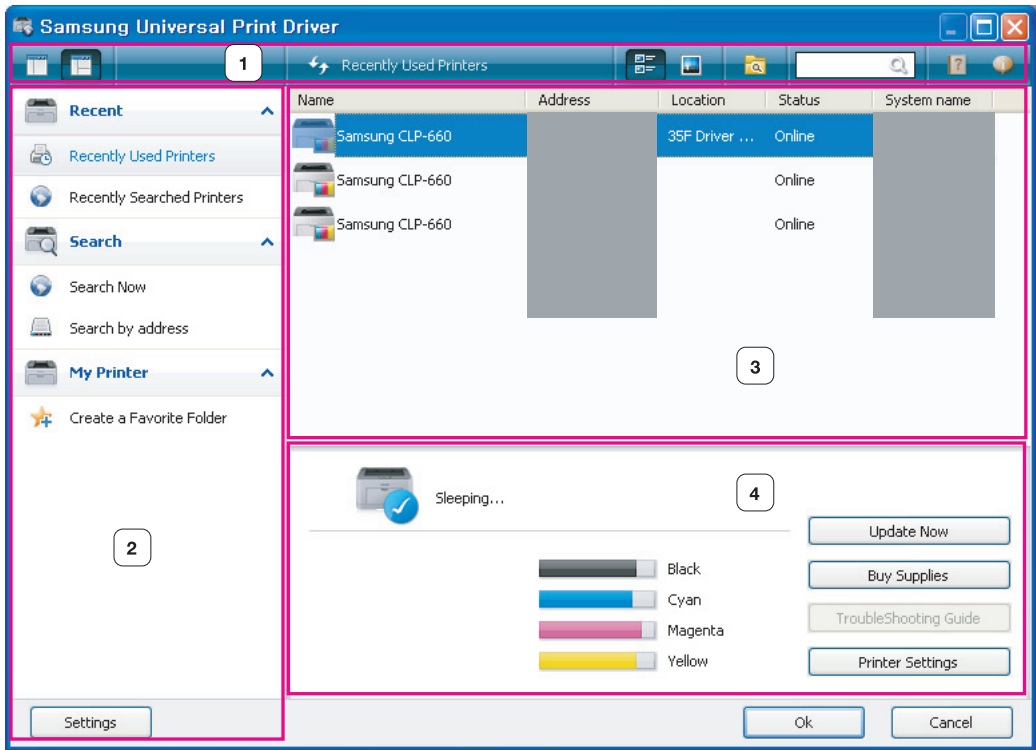
1. From the Windows **Start** menu, select **Printers and Faxes**.
2. Right-click Samsung Universal Print Driver.
3. Click **Printing Preferences** or **Properties**.

Samsung Universal Print Driver window opens.



 If there's no recently used printer, a pop-up window asking you to search printers appears. Click **OK** to search connected printers.






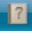

Layout overview



Layout bar

Includes displaying options.

1

-  : Selects the layout for the Samsung Universal Print Driver window. If you choose **Layout2** and installed the Samsung Smart Panel program, you can see the status window(number 4).
-  : Refreshes all the printer information in the list.
-  : Selects the view type for the printer list. **Detail View** shows printer information such as **Address**, **Location**, **Status** and **System name**. **Image View** also shows printer information except with a larger printer image. This option is only supported on Windows XP(and later).
-  : Displays the printer list in groups. This option is only supported on Windows XP(and later).
-  : Searches for a printer in the list by a keyword like a model name.
-  : Opens the help window.
-  : Shows information about the Samsung Universal Print Driver.

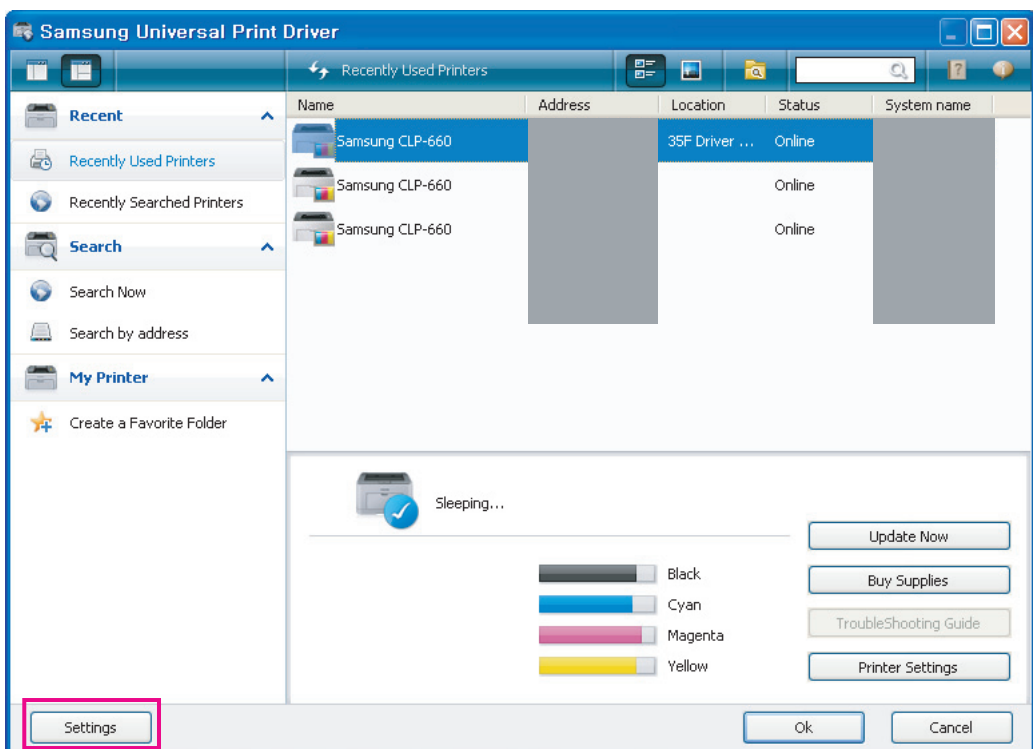
2	Main menus	<ul style="list-style-type: none"> Recent <ul style="list-style-type: none"> Recently Used Printers: Shows the list of recently used printers. The most recently used printer is at the top of the list. Recently Searched Printers: Shows the list of recently found printers. The most recently found printer is at the top of the list. Search <ul style="list-style-type: none"> Search Now: Searches printers that are connected either by USB or network. Search by Address: Searches for a printer by the printer's IP address. My Printer <ul style="list-style-type: none"> Create a Favorite Folder: Creates a folder for favorite printers. Settings: Displays options for pop-ups and searches.
3	Printer list	Shows printer list.
4	Status window	<p>Shows status of the selected printer in the list. You need to select Layout2 and install the Samsung Smart Panel program to see this window.</p> <ul style="list-style-type: none"> Update Now: Updates the selected printer's information. Buy Supplies: Opens the website for buying supplies. TroubleShooting Guide: Opens the troubleshooting chapter of the user's guide. You need to install the Smart Panel of the model you are using to see the troubleshooting guide. Printer Settings: Opens SyncThru Web Service, which provides options for configuring and managing your printer. You can only use this option with network printers.

Changing Samsung Universal Print Driver settings

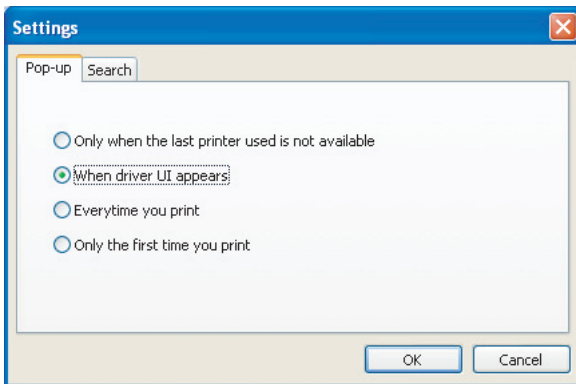
Setting the pop-up option

You can set the Samsung Universal Print Driver window to appear when you print. There are four options for this window to pop-up:

1. Click the **Settings** button on the bottom left corner.



2. Click the **Pop-up** tab. A sample of **Pop-up** tab is shown in the following figure.



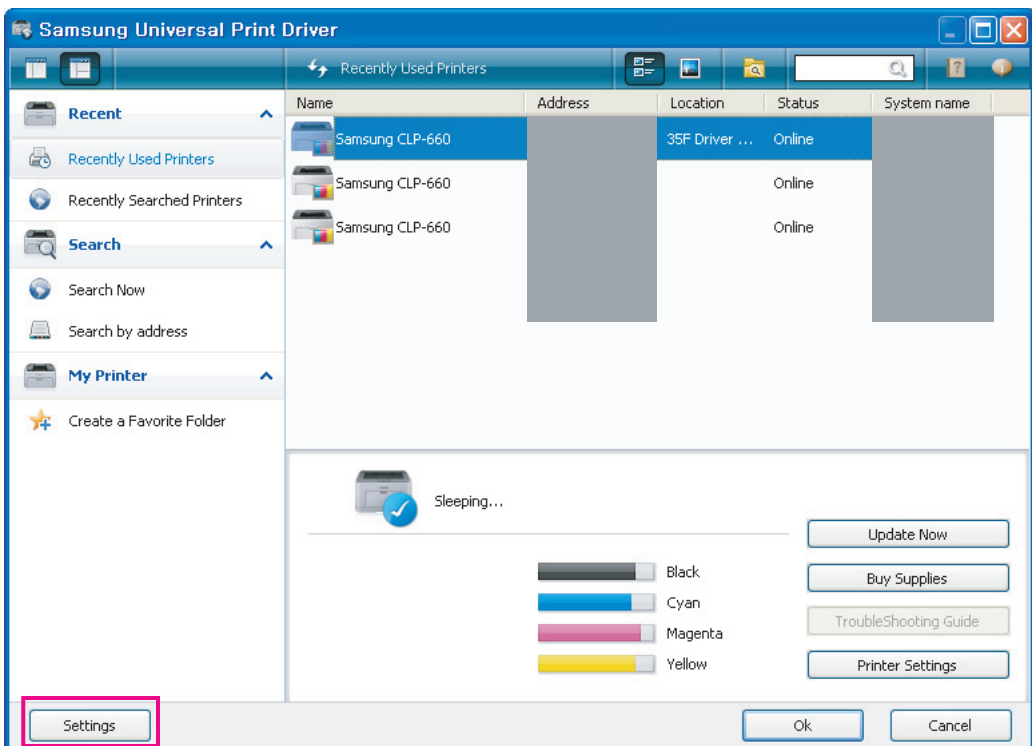
- **When driver UI appears:** The Samsung Universal Print Driver window appears when you open a **Printing Preferences (Properties)** window.
- **Every time you print:** The Samsung Universal Print Driver window appears every time you print.
- **Only the first time you print:** The Samsung Universal Print Driver window appears only for the first time when Samsung Universal Print Driver is selected as the printer from an application.
- **Only when the last printer used is not available:** The Samsung Universal Print Driver window appears only if the printer that was last used is not available.

3. Click **OK**.

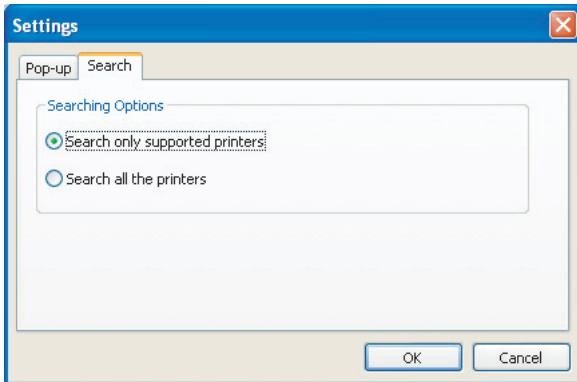
Setting the printer search option



To set the search options for the Samsung Universal Print Driver, follow the steps below:

1. Click the **Settings** button on the bottom left corner.



2. Click the **Search** tab and select one of the following options.



- **Search only supported printer:** Searches only supported printers connected.
 Click  to see the supported Samsung device list
 - **Search all the printers:** Searches all connected printers.
3. Click **OK**.

Searching print devices

By TCP/IP address


If you know the TCP/IP address of the print device you want to use, you can search the device by typing the TCP/IP address. Follow the steps below:

1. From the Windows **Start** menu, select **Printers and Faxes**.
2. Right-click Samsung Universal Print Driver.
3. Click **Printing Preferences** or **Properties**.
The Samsung Universal Print Driver window opens.
4. Click **Search by Address**.
A window appears.
5. Type in the TCP/IP address of your printer and click **OK**.

By Search Now menu

If you don't know the TCP/IP address of the print device you want to use, you can use the **Search Now** option to search for the device. Follow the steps below:

1. From the Windows **Start** menu, select **Printers and Faxes**.
2. Right-click Samsung Universal Print Driver.
3. Click **Printing Preferences** or **Properties**.
Samsung Universal Print Driver window opens.
4. Click **Search Now**.
Samsung Universal Print Driver searches the connected print devices.

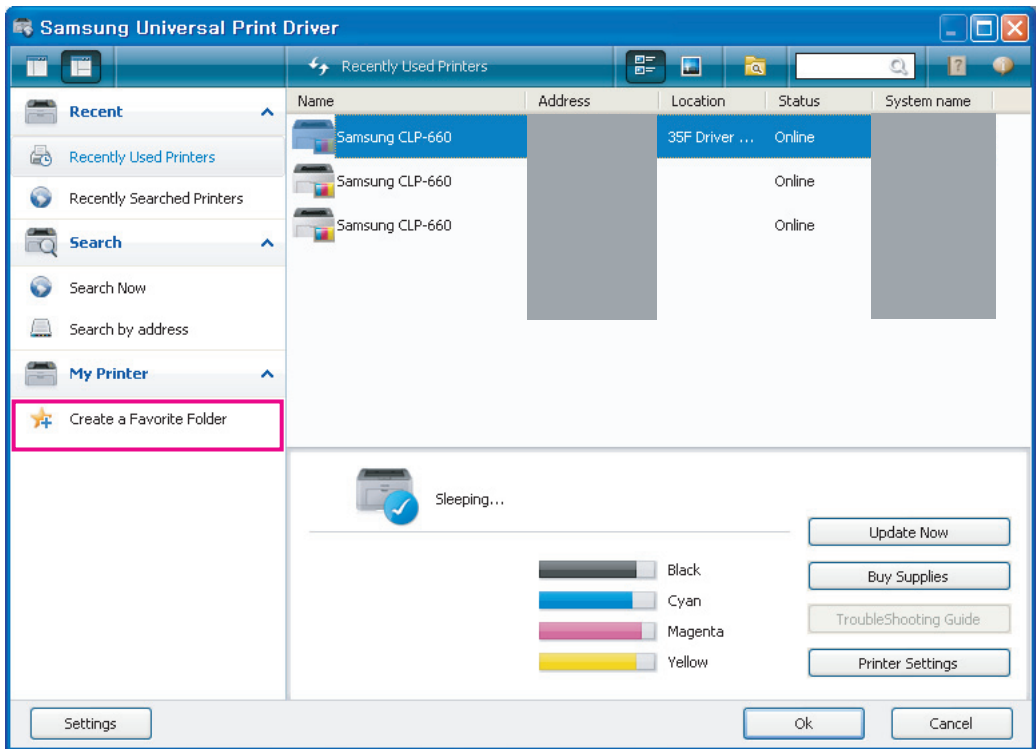
 The search result might differ depending on the search option you have selected (See "Setting the printer search option" on page10.)

Creating a favorite folder

You can create a folder with the printers you use the most for your convenience. For example, if you travel between home and work sites, you can create two different printer folders; **Home** and **Work**, and manage the printers as needed.

To create a favorite folder, follow the steps below:

1. Click **Create a Favorite Folder**.
Add new favorite folder window appears.



2. Type in a folder name.
3. Click **OK**.

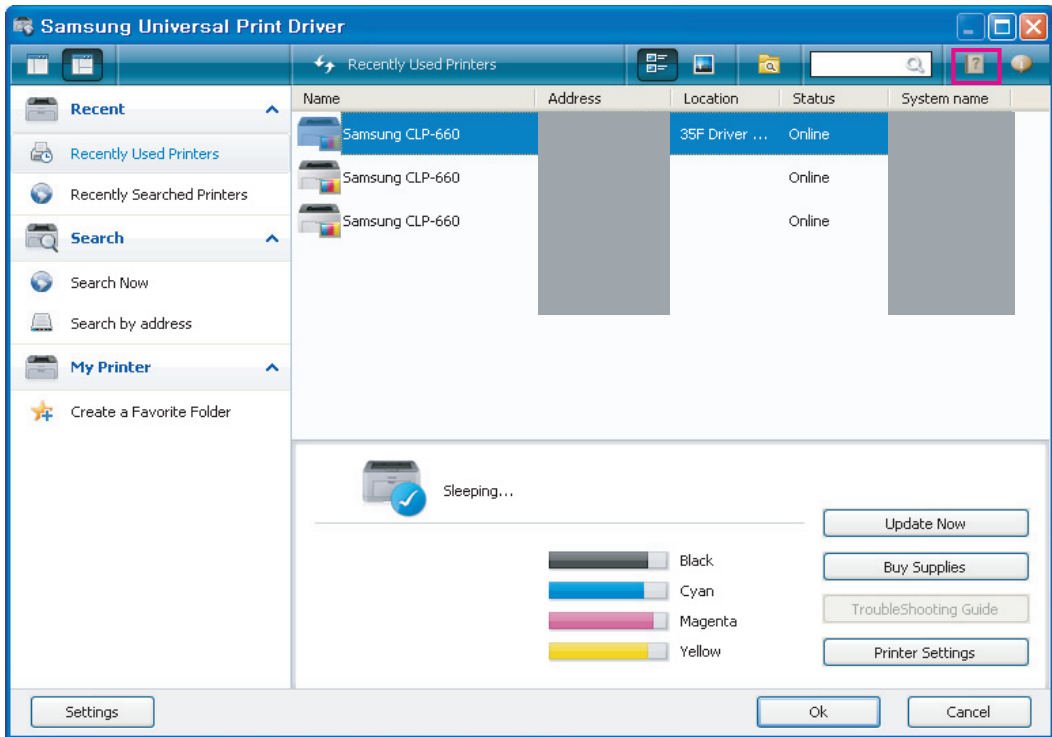
A new folder is added under **My Printer**.



To add printers to a folder under **My Printer**, you can drag-and-drop the print from the list to the folder or right-click the printer in the list and select **Move** or **Copy**.

Help

Click the Help button (?) in the upper right of the Samsung Universal Print Driver window. A help window appears. Use this help to answer your questions about using the Samsung Universal Print Driver.



Printing with Samsung Universal Print Driver

Basic printing

To print a document using Samsung Universal Print Driver, follow the steps below:



The following steps show printing from Notepad. Menu names might differ depending on the application you are using.

1. Open the file that you want to print in an application.
2. From the menu bar select **File > Print**.
3. Select the Samsung Universal Print Driver from the printer list.
4. Click **OK**. Printing begins.
Or, depending on the pop-up option (see "Setting the pop-up option" on page 9) you selected, the Samsung Universal Print Driver window might appear before printing. Choose the printer you want to use and print.

Changing the selected printer

1. From the Windows **Start** menu, select **Printers and Faxes**.
2. Right-click Samsung Universal Print Driver.
3. Click **Printing Preferences** or **Properties**.
Printing Preferences (Properties) window opens.
4. Select another printer either from the printer list or by searching (See "Searching print devices" on page 11).
5. Click **OK**. All subsequent printing will now be directed to the new printer.

Index

A

accessing 7

C

copyright 2

D

difference 4

F

folder 11

I

installing 5

introduction 4

L

layout 8

P

printing 13

S

search

- search button 11
- TCP/IP 11

setting 9

- pop-up window 9
- search option 10

system requirements 4

U

uninstalling 6

using 7